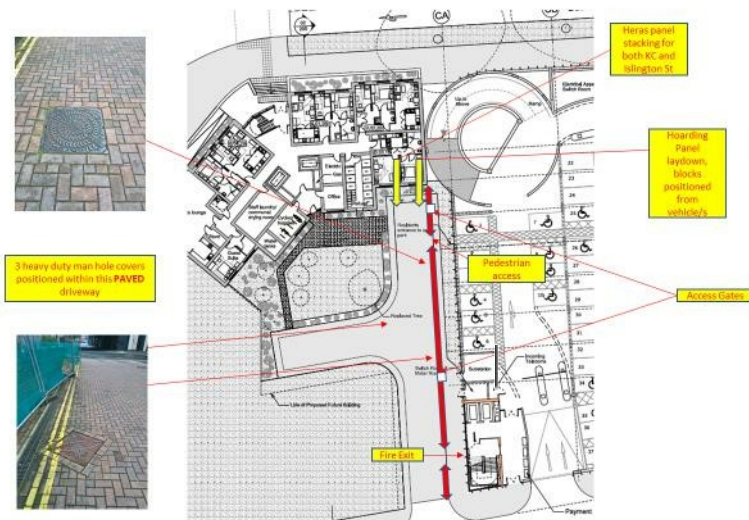




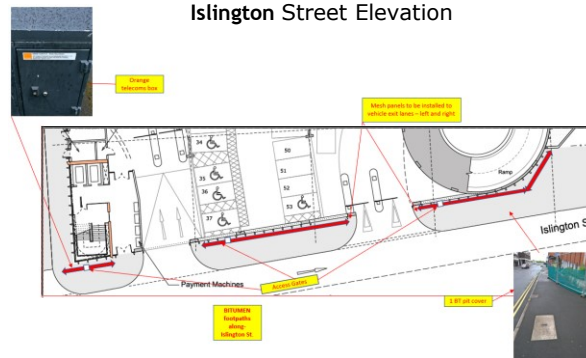
To Whom it may concern.

At the request of Swindon Borough Council, the Heras Fencing currently surrounding the Whalebridge Multi Storey Car Park is to be removed (progressively) and replaced with timber hoarding. Work will commence Monday 24th August and is planned to be completed Friday 28th August. During this period replacement Hoarding will be delivered to replace the Heras fencing as it is removed. We ask all residents and visitors to the Kimmerfield Court, Islington and Princes Street's areas to assist by adhering to the installations teams directions regarding safe distancing/ separation from operating plant/materials movements whilst the dismantle/storage and installation works are in progress. Work will commence daily at 08:00 and will conclude at 17:00.

Kimmerfield Court (KC) elevation.



Islington Street Elevation



Princes Street Elevation

